

Naturale - Natural

1.01	3.0	4.0	5.0	6.0	7.0	8.0	9.0	10.0
Nero Black	Castano Scuro Dark Brown	Castano Medium Brown	Castano Chiaro Light Brown	Biondo Scuro Dark Blonde	Biondo Medium Blonde	Biondo Chiaro Light Blonde	Biondo Chiarissimo Very Light Blonde	Biondo Platino Platinum Blonde

Cenere - Ash

5.1	6.1	7.1	8.1	9.1	10.1
Castano Chiaro Cenere Light Ash Brown	Biondo Scuro Cenere Dark Ash Blonde	Biondo Cenere Medium Ash Blonde	Biondo Chiaro Cenere Light Ash Blonde	Biondo Chiarissimo Cenere Very Light Ash Blonde	Biondo Platino Cenere Platinum Ash Blonde

Beige

6.2	7.2	8.2	9.2
Biondo Scuro Beige Dark Beige Blonde	Biondo Beige Medium Beige Blonde	Biondo Chiaro Beige Light Beige Blonde	Biondo Chiarissimo Beige Very Light Beige Blonde

Marrone - Brown

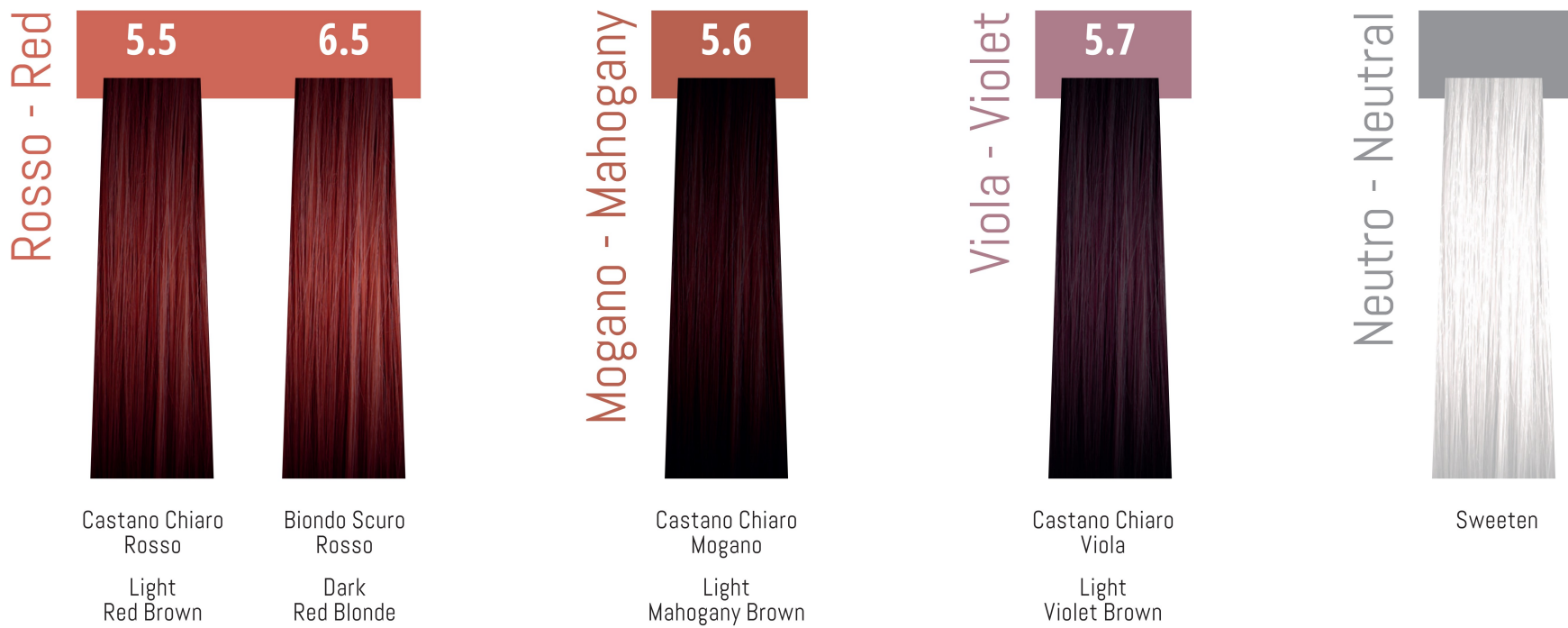
4.24	5.24	6.24	7.24
Castano Marrone Medium Chestnut Brown	Castano Chiaro Marrone Light Chestnut Brown	Biondo Scuro Marrone Dark Chestnut Blonde	Biondo Marrone Medium Chestnut Blonde

Dorato - Golden

6.3	7.3	8.3	9.3
Biondo Scuro Dorato Dark Golden Blonde	Biondo Dorato Medium Golden Blonde	Biondo Chiaro Dorato Light Golden Blonde	Biondo Chiarissimo Dorato Very Light Golden Blonde

Rame - Copper

6.4	7.4
Biondo Scuro Rame Dark Copper Blonde	Biondo Rame Medium Copper Blonde






MC2/FASTCOLOR COME SI USA - HOW TO USE

ITA Dopo un'attenta diagnosi professionale, miscela **MC2 FAST COLOR** con **CREAM ACTIVATOR** nel rapporto di diluizione ideale per il risultato che vuoi ottenere.

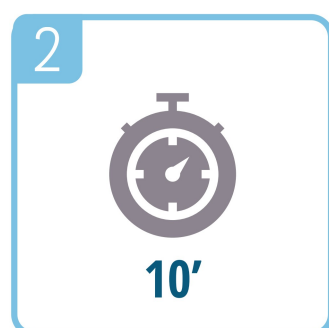
ENG After a careful professional diagnosis, mix **MC2 FAST COLOR** with **CREAM ACTIVATOR** in the most suitable dilution ratio for the result you wish to obtain.

	COLORAZIONE INTENSA E PROFONDA DELLE RADICI
	COLORAZIONE MORBIDA E LUCENTE DELLE RADICI
	COLORAZIONE TONALIZZANTE DI LUNGHEZZE E PUNTE

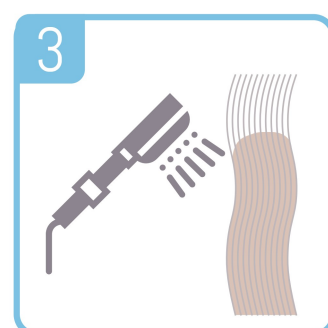
	INTENSE AND DEEP COLOR ON THE ROOTS
	SOFT AND GLOSSY COLOR ON THE ROOTS
	TONING COLOR ON THE LENGTHS AND ENDS



1. APPLICA IN MODO RAPIDO E PRECISO.
1. APPLY QUICKLY AND PRECISELY.



2. LASCIA AGIRE PER 10 MINUTI.
2. LEAVE FOR 10 MINUTES.



3. RISCIAQUA.
3. RINSE.



4. PROCEDI CON I CONSUETI SERVIZI POST COLORAZIONE, E QUINDI CON LO STYLING.
4. CONTINUE WITH THE USUAL POST-COLOR SERVICES AND THEN STYLE.